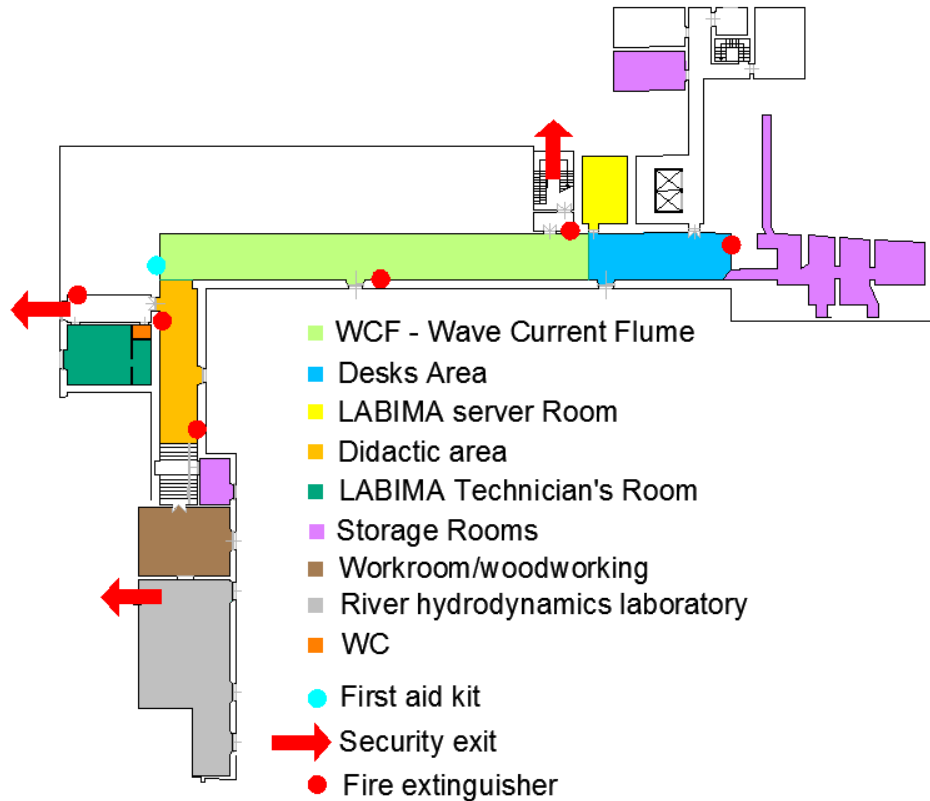




LABIMA



Maritime Engineering Laboratory
of Florence University

SAFETY INFORMATION



UNIVERSITÀ
DEGLI STUDI
FIRENZE

DICEA
DIPARTIMENTO
DI INGEGNERIA CIVILE
E AMBIENTALE

Contact/Emergency numbers:

- ✓ LABIMA: **+390552758822**
- ✓ Prof. L. Cappiotti: **+39 3666781908**
- ✓ LABIMA technician: **+390552758821** (M. Mascherini)
- ✓ UNIFI technical emergency:
+393666035128
+393666035158
- ✓ Police/Fire/Medical emergency: **112**

LABIMA Safety Pack

- ✓ One safety jacket
- ✓ One dust coat
- ✓ A pair of working gloves
- ✓ A pair of working glasses
- ✓ A pair of noise-free headphones
- ✓ Personal badge

Safety information:

- ✓ Do not access the LABIMA unattended.
- ✓ Do never use any laboratory equipment without the supervision of a member of LABIMA staff.
- ✓ Never stand close to the wave maker when the system is in operation. This could result in injury.
- ✓ Take care when reaching electrical panels and using electrical equipment, there is a risk of electric shock.
- ✓ Always wear the Personal Protective Equipment provided.
- ✓ Report malfunctioning equipment to the person responsible immediately.
- ✓ Maintain unobstructed access to all exits, fire extinguishers, electrical panels.
- ✓ Always make sure to lock the LABIMA door when entering/exiting.